

# Aiko Aiko

Voice

SOCA — CALYPSO ♩=112

15



21



27



33

16



53



59

Da Capo al fine



# Aiko Aiko

Glockenspiel

**SOCA — CALYPSO**  $\text{♩} = 112$

**15** C C C C C C G

21 G G G G G G C C C C C

27 C C G G G G G G G G C

33 **16** C C C C C C G G G

54 G G G G C C C C C

59 C C G G G G G G G C

**Da Capo al fine**

# Aiko Aiko

Trumpet in B $\flat$

## SOCA — CALYPSO $\text{♩} = 112$

**15**

1/3 1/3 1/3 1/3 1/3 1/3 1/2

21

1/2 1/2 1/2 1/2 1/2 1/2 1/3 1/3 1/3 1/3

27

1/3 1/3 1/2 1/2 1/2 1/2 1/2 1/2 1/3

**16**

1/3 1/3 1/3 1/3 1/3 1/3 1/2 1/2 1/2

54

1/2 1/2 1/2 1/2 1/3 1/3 1/3 1/3 1/3 1/3

59

1/3 1/3 1/2 1/2 1/2 1/2 1/2 1/2 1/3

**Da Capo al fine**

# Aiko Aiko

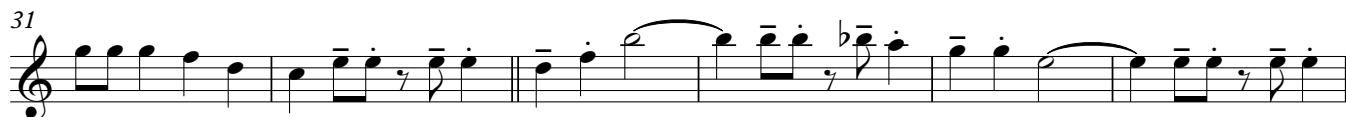
Part 1 (C')

SOCA — CALYPSO  $\text{♩} = 112$

arr. Bert Groothedde



*fine*



Da Capo al fine

# Aiko Aiko

Part 1 (C)

SOCA — CALYPSO  $\text{♩} = 112$

arr. Bert Groothedde



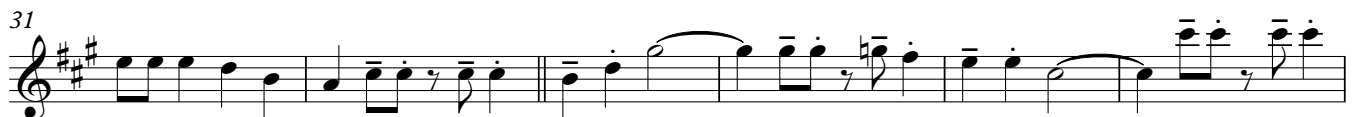
Da Capo al fine

# Aiko Aiko

Part 1 (Eb)

SOCA — CALYPSO  $\text{♩} = 112$

arr. Bert Groothedde

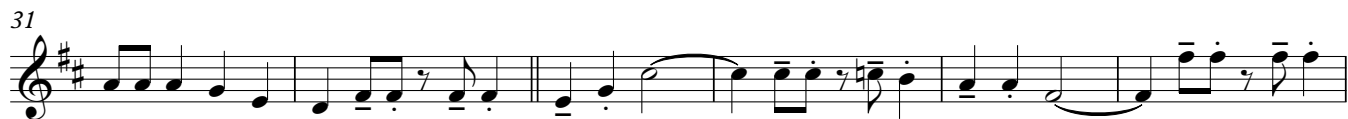


# Aiko Aiko

Part 1 (Bb)

SOCA — CALYPSO  $\text{♩} = 112$

arr. Bert Groothedde



# Aiko Aiko

Part 2 (C')

arr. Bert Groothedde

SOCA — CALYPSO  $\text{♩} = 112$



*fine*



**Da Capo al fine**

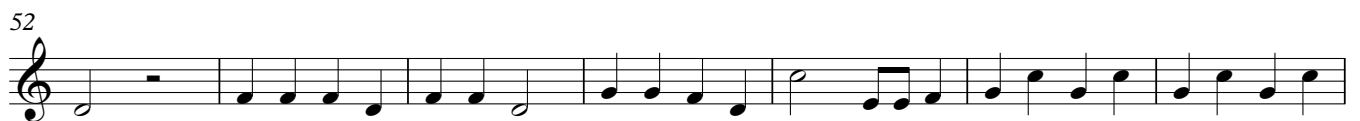


# Aiko Aiko

Part 2 (C)

arr. Bert Groothedde

SOCA — CALYPSO  $\text{♩} = 112$

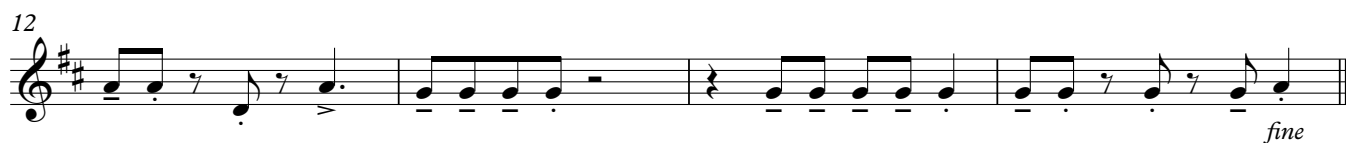
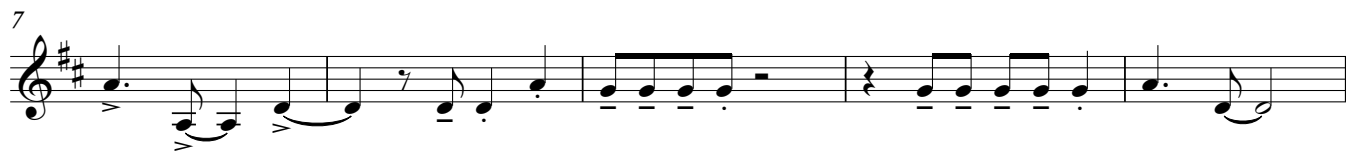


# Aiko Aiko

Part 2 (Bb)

SOCA — CALYPSO  $\text{♩} = 112$

arr. Bert Groothedde



# Aiko Aiko

Part 2 (Eb)

arr. Bert Groothedde

SOCA — CALYPSO  $\text{♩} = 112$

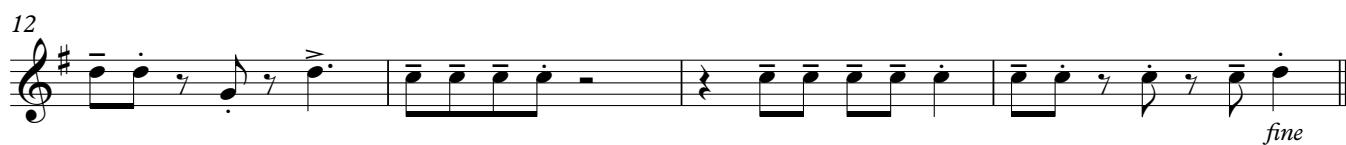


# Aiko Aiko

Part 2 (F)

arr. Bert Groothedde

SOCA — CALYPSO ♩=112



# Aiko Aiko

Part 3 (Bb) TC

arr. Bert Groothedde

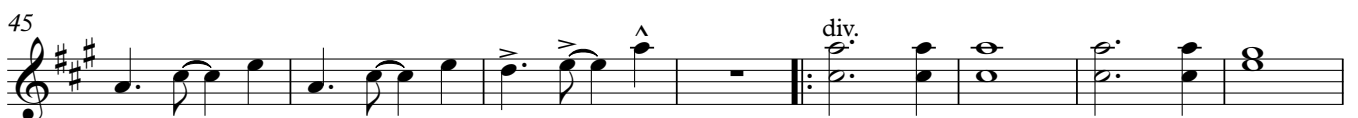
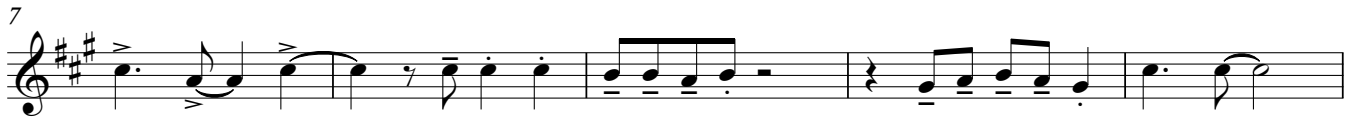
SOCA — CALYPSO  $\text{♩} = 112$



# Aiko Aiko

arr. Bert Groothedde

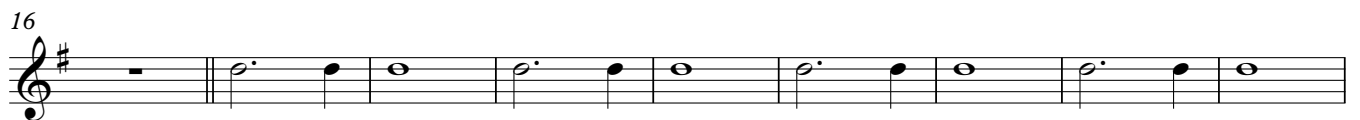
SOCA — CALYPSO  $\text{♩} = 112$



# Aiko Aiko

arr. Bert Groothedde

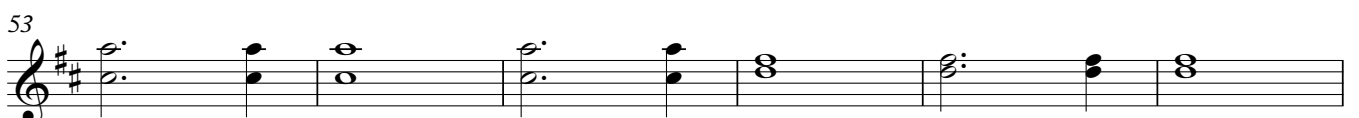
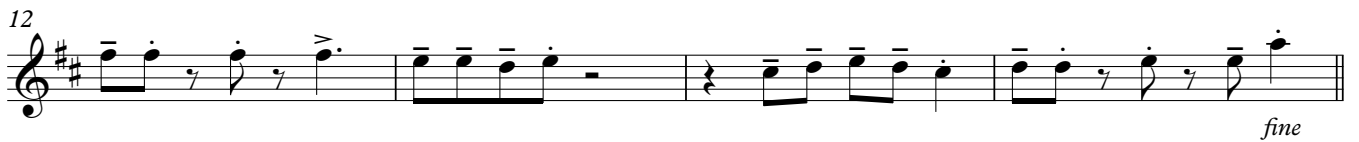
SOCA — CALYPSO  $\text{♩} = 112$



# Aiko Aiko

arr. Bert Groothedde

SOCA — CALYPSO  $\text{♩} = 112$





# Aiko Aiko

Part 3 (C) BC

arr. Bert Groothedde

SOCA — CALYPSO  $\text{♩} = 112$



# Aiko Aiko

Part 4 (Eb)

arr. Bert Groothedde

SOCA — CALYPSO  $\text{♩} = 112$



# Aiko Aiko

arr. Bert Groothedde

SOCA — CALYPSO ♩=112



Da Capo al fine

# Aiko Aiko

arr. Bert Groothedde

SOCA — CALYPSO  $\text{♩} = 112$

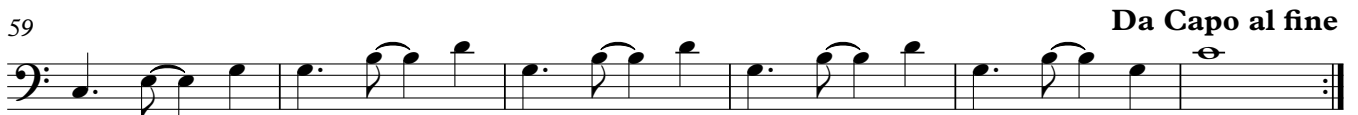
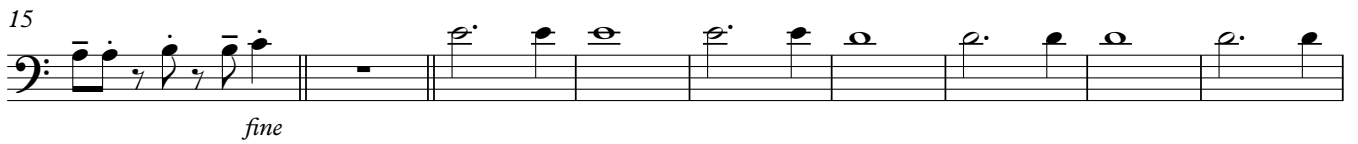


# Aiko Aiko

Part 4 (C) BC

arr. Bert Groothedde

SOCA — CALYPSO ♩=112



# Aiko Aiko

Part 5 (Eb) TC

arr. Bert Groothedde

SOCA — CALYPSO  $\text{♩} = 112$



# Aiko Aiko

Part 5 (Eb) BC

arr. Bert Groothedde

SOCA — CALYPSO  $\text{♩} = 112$



# Aiko Aiko

Part 5 (Bb) TC

arr. Bert Groothedde

SOCA — CALYPSO  $\text{♩} = 112$



Da Capo al fine

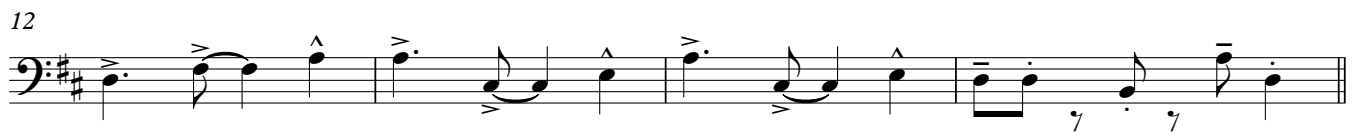


# Aiko Aiko

Part 5 (Bb) BC

arr. Bert Groothedde

SOCA — CALYPSO  $\text{♩} = 112$



# Aiko Aiko

SOCA — CALYPSO  $\text{♩} = 112$

arr. Bert Groothedde



7



12



16



23



28



33



39



46



53



59

Da Capo al fine

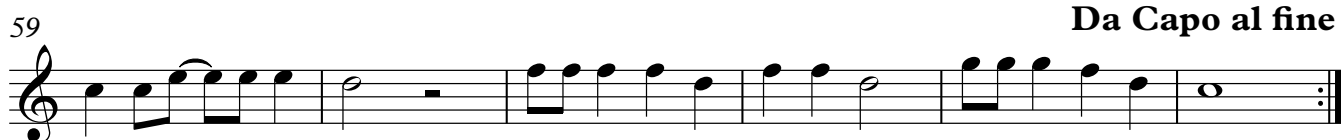
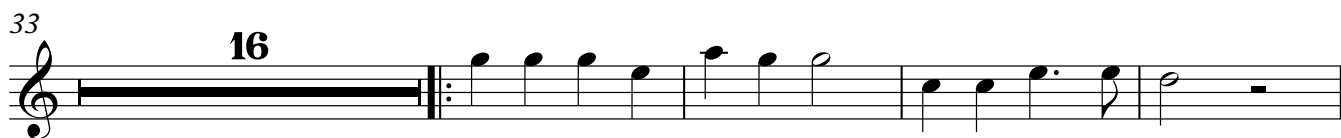
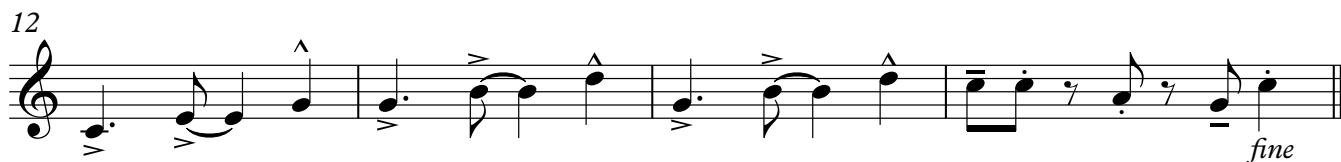


# Aiko Aiko

Xylophone

arr. Bert Grootjedde

## SOCA — CALYPSO $\text{♩} = 112$



# Aiko Aiko

Drum Set

arr. Bert Groothedde

## SOCA — CALYPSO $\text{♩} = 112$

8

*f*

8

16

23

32

40

49

57

**Da Capo al fine**